

Opening Adobe PDF Documents in Google Chrome



The Wisconsin Department of Revenue (DOR) uses the Adobe LiveCycle platform for maximum compatibility with our users' systems. However, Adobe PDFs currently are not supported by Chrome, Firefox or Microsoft Edge. At this time, our users report successfully opening forms in Internet Explorer.

If you are using Google Chrome, follow the steps below to download and open Adobe PDF documents on your computer:

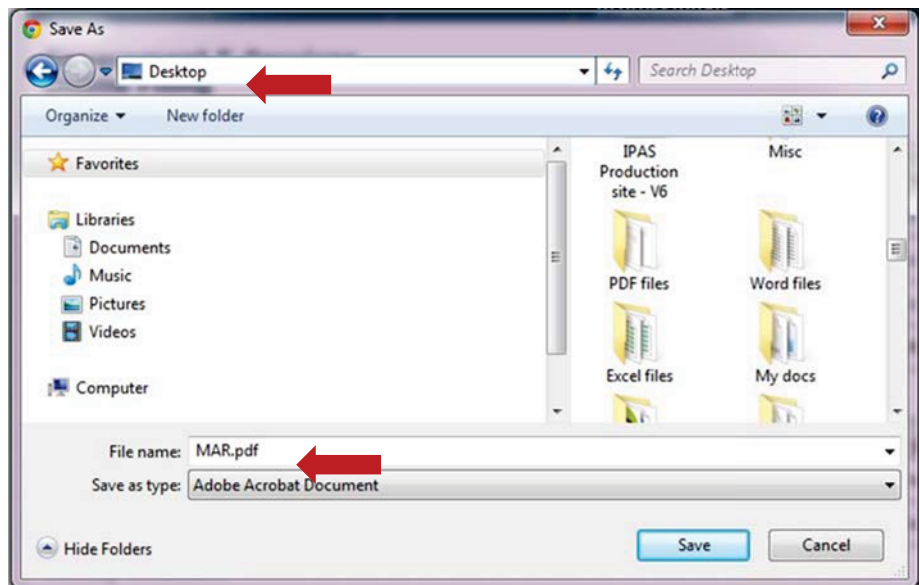
Step A

1. Right click the PDF file
2. Choose "Save link as..."



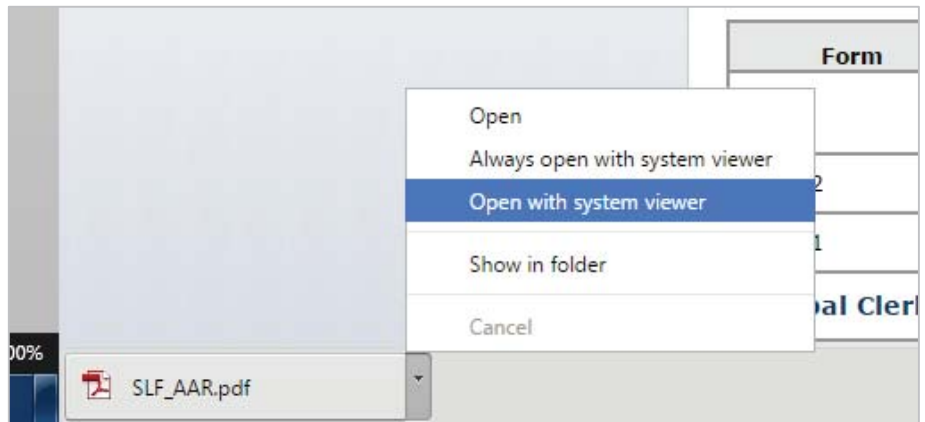
Step B

1. Save the file – choose the location where you would like to save the document on your computer
2. Verify the file name and location so you can easily find the file after saving it



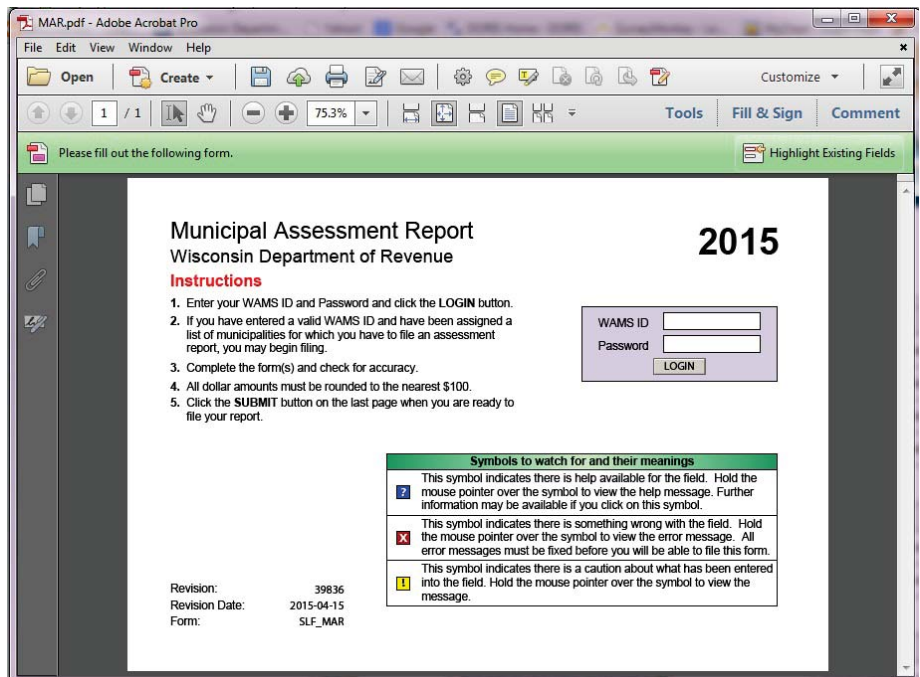
Step C

1. After saving the document, it will appear as an icon in the lower left corner of your screen
2. Click the drop down arrow and select Open with system viewer (See step D below)



Step D

When you open the file, it will open in your default PDF program. (ex: Adobe Reader)



Note: If your document has fields that should pre-fill, all the appropriate fields will pre-fill, if you are connected to the Internet.